

Theory  
3006

Theory 3006

Specifications

Content	100% pre-consumer recycled polyester
Weight	10.8 ± 1.0 oz./lin. yd.
Width	66" min. useable
Repeat	none

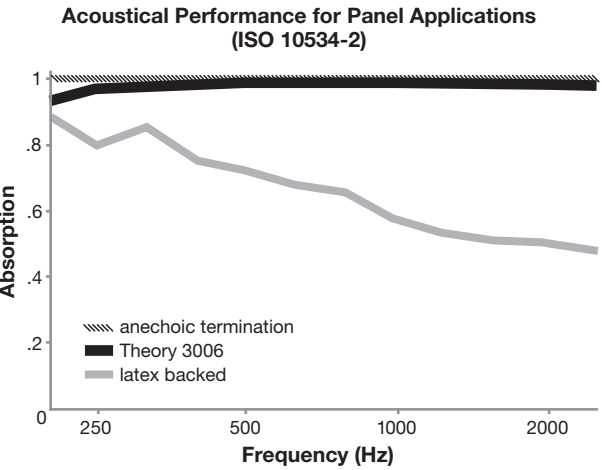
Cleaning Code

Standard Care Label W-S. Clean with water based cleaning agents, foam or pure, water free solvents. Vacuuming or light brushing is recommended to prevent dust and soil buildup.

**Bleach Cleanable** - May be cleaned with a 10% bleach-to-water solution. Rinse well after cleaning. May also be disinfected with hydrogen peroxide, alcohol, and quaternary ammonium (quat) based cleaners.





Acoustical Performance

The plot below summarizes impedance tube measurements of absorption of an anechoic termination and various fabrics in front of the anechoic termination.





NRC of anechoic termination	1.00
NRC of fabric in front of anechoic termination	1.00

Performance

	Colorfastness to Light (AATCC 16.3 Option 3) <b>Grade 4 min. at 40 hours</b>
	Colorfastness to Crocking (AATCC 8) <b>Grade 4 min. dry &amp; Grade 3 min. wet</b>
	Breaking Strength (ASTM D5034) <b>175 lbf min. warp and 150 lbf min. fill</b>
	Flammability (ASTM E84) <b>Class I or A</b>


Sustainability

	<b>100% recycled and recyclable</b> Terratec is a registered trademark of Duvaltex
	<b>facts</b> <sup>™</sup> Compliant

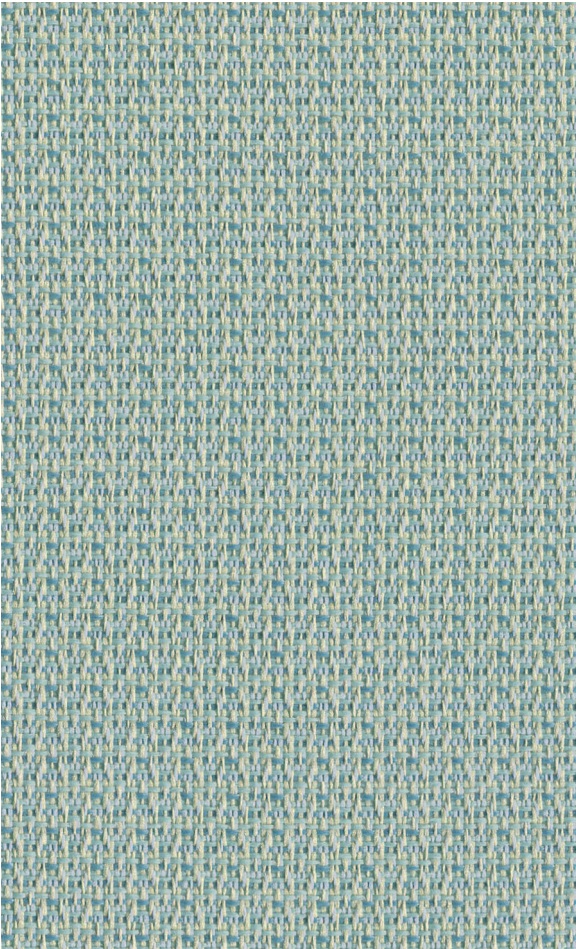
Miscellaneous

Proudly woven in North America supporting our local communities.

Application testing of this product is recommended. Colors may vary between dye lots. This is a directional fabric.

 This pattern is included in the underwriters laboratory panel fabric recognition program. Additional testing of this U.L. recognized component fabric is not required on approved panels from participating manufacturers.

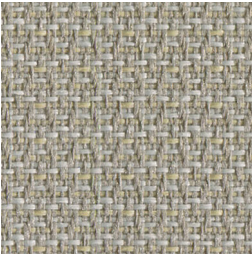
\*Certification Marks owned by the Association for Contract Textiles, Inc.



Marina  
050



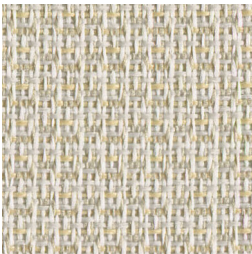
Pewter  
031



Truffle  
012



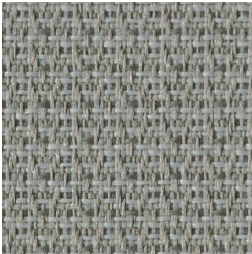
Cotton  
040



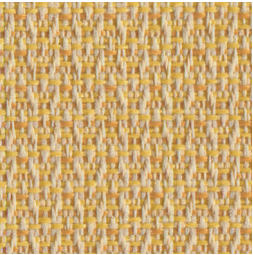
Bisque  
033



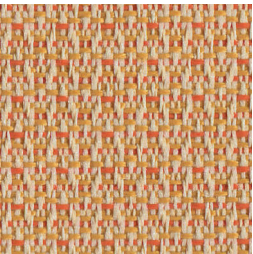
Camel  
032



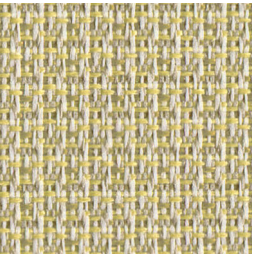
Shadow  
010



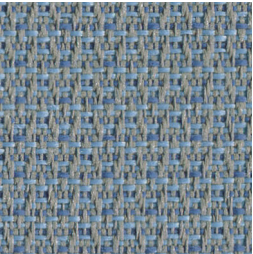
Citrus  
021



Spice  
020



Chive  
030



Lagoon  
011