

Pursuit 3034

Pursuit 3034

Specifications

Content	100% pre-consumer recycled polyester
Weight	9.1 ± 0.5 oz./lin. yd.
Width	66" min. useable
Repeat	none
Treatment	polyester binder

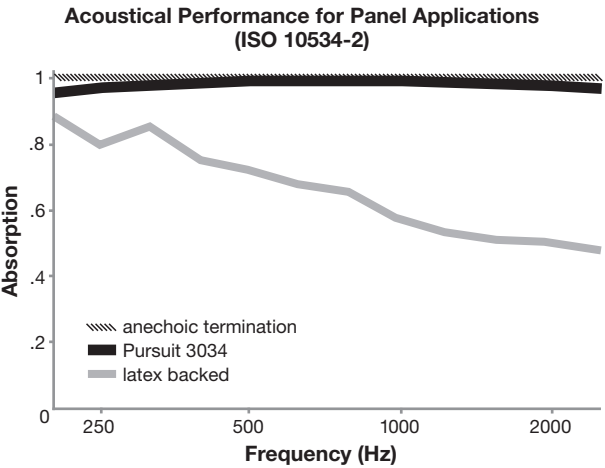
Cleaning Code

Standard Care Label W-S. Clean with water based cleaning agents, foam or pure, water free solvents. Vacuuming or light brushing is recommended to prevent dust and soil buildup.

Bleach Cleanable - May be cleaned with a 10% bleach-to-water solution. Rinse well after cleaning. May also be disinfected with hydrogen peroxide, alcohol, and quaternary ammonium (quat) based cleaners.

Acoustical Performance

The plot below summarizes impedance tube measurements of absorption of an anechoic termination and various fabrics in front of the anechoic termination.



NRC of anechoic termination	1.00
NRC of fabric in front of anechoic termination	1.00

Performance

	Colorfastness to Light (AATCC 16.3 Option 3) Grade 4 min. at 40 hours
	Colorfastness to Crocking (AATCC 8) Grade 4 min. dry & Grade 3 min. wet
	Breaking Strength (ASTM D5034) 125 lbf min. warp and 100 lbf min. fill
	Flammability (ASTM E84) Class I or A

Sustainability

	100% recycled and recyclable Terratex is a registered trademark of Duvaltex
	facts [™] Compliant

Miscellaneous

Proudly woven in North America supporting our local communities.

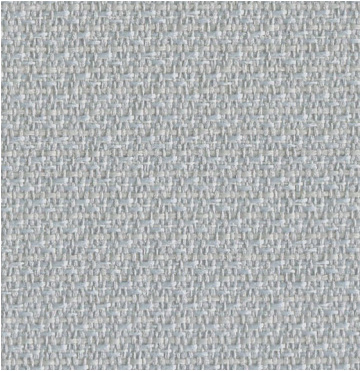
Application testing of this product is recommended. Colors may vary between dye lots. This is a directional fabric.

This pattern is included in the underwriters laboratory panel fabric recognition program. Additional testing of this U.L. recognized component fabric is not required on approved panels from participating manufacturers.

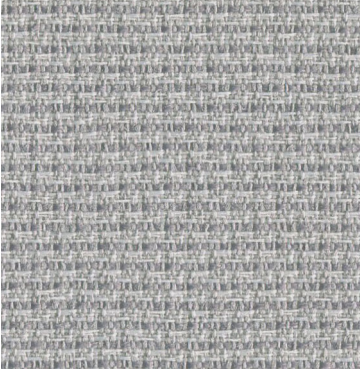
*Certification Marks owned by the Association for Contract Textiles, Inc.



White Linen
7040



Whisper
7010



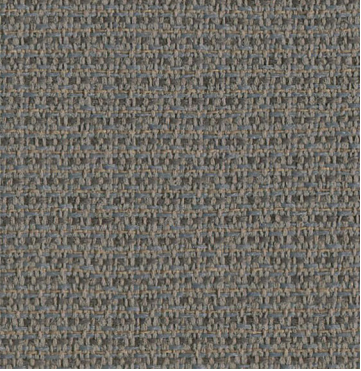
Dove
7011



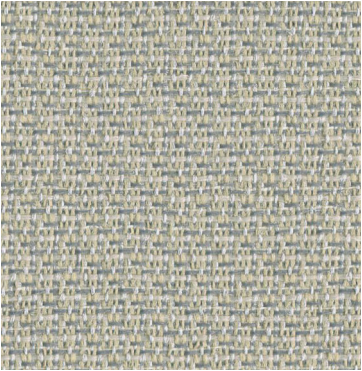
Lemon Zest
7020



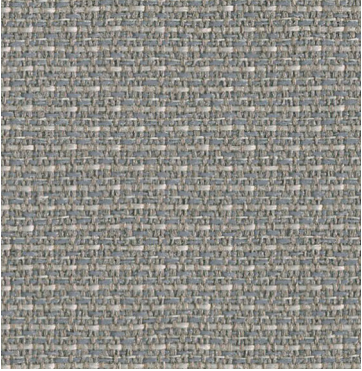
Fern
7050



Elephant
7031



Mist Grey
7051



Cement
7030