

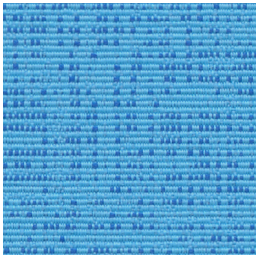
Panel | Acoustic
Marin 1300



Sunfish
1153



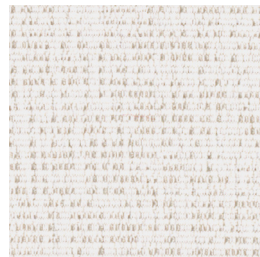
Mangrove
1154



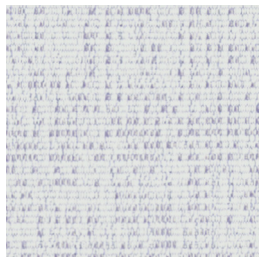
Dolphin
1147



Benthic
1157



Great White
1143



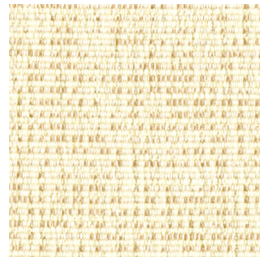
Ice Edge
1145



Clownfish
1152



Intertidal
1156



Tusk
1144



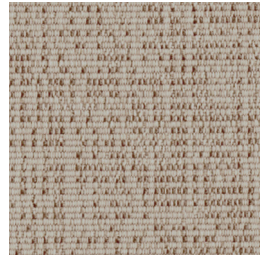
Sea Glass
1146



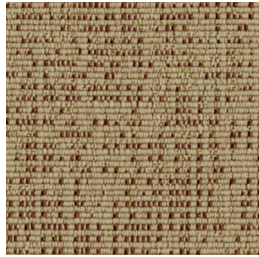
Red Snapper
1151



Carrageen
1150



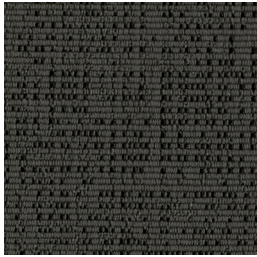
Sand
1142



Pelican
1141



Grey Whale
1148



Blacktip
1149

Marin 1300

Specifications

Content	90% post-consumer recycled polyester including ocean waste 10% polyester
Weight	12.5 ± 1.0 oz./lin. yd
Width	67" min. useable
Repeat	horizontal 12.76" vertical 19.1"

Cleaning Code

Standard Care Label W-S. Clean with water based cleaning agents, foam or pure, water free solvents. Vacuuming or light brushing is recommended to prevent dust and soil buildup. May also be disinfected with hydrogen peroxide, alcohol, and quaternary ammonium (quat) based cleaners.

Miscellaneous

- Application testing of this product is recommended.
- Colors may vary between dye lots.
- This is a directional fabric.

Proudly woven in North America supporting our local communities.

Sustainability





OCEAN WASTE CLEAN IMPACT TEXTILES™ tackle one of the most pressing environmental issues we face today: pollution of oceans by plastics.

SEAQUAL INITIATIVE

By partnering with the SEAQUAL INITIATIVE, we transform ocean waste into amazing textiles.

Duvaltex is an official and authorized advertiser of SEAQUAL® YARN, the SEAQUAL INITIATIVE and their related trademarks, under licence agreement. Only SEAQUAL licensees are permitted to publicly advertise details about SEAQUAL trademarks.

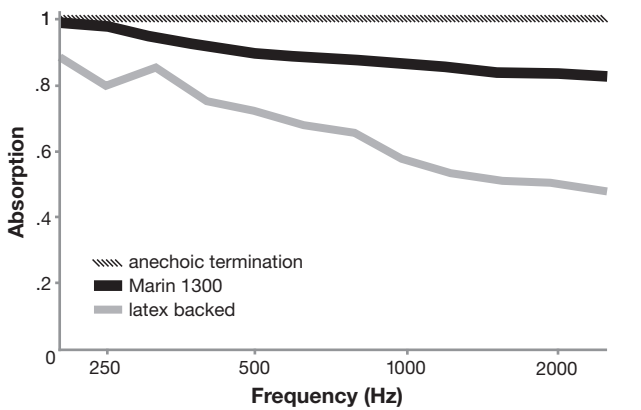
Performance

	Colorfastness to light (AATCC 16.3 Option 3) Grade 4 min. at 40 hours
	Colorfastness to crocking (AATCC 8) Grade 4 min. dry & Grade 3 min. wet
	Breaking Strength (ASTM D5034) 245 lbf min. warp and 170 lbf min. fill
	Flammability ASTM E84 Class I or A


Acoustical Performance

The plot below summarizes impedance tube measurements of absorption of an anechoic termination and various fabrics in front of the anechoic termination.

Acoustical Performance for Panel Applications (ISO 10534-2)



NRC of anechoic termination	1.00
NRC of fabric in front of anechoic termination	.90

 This pattern is included in the underwriters laboratory panel fabric recognition program. Additional testing of this U.L. recognized fabric is not required on approved panels from participating manufacturers.