

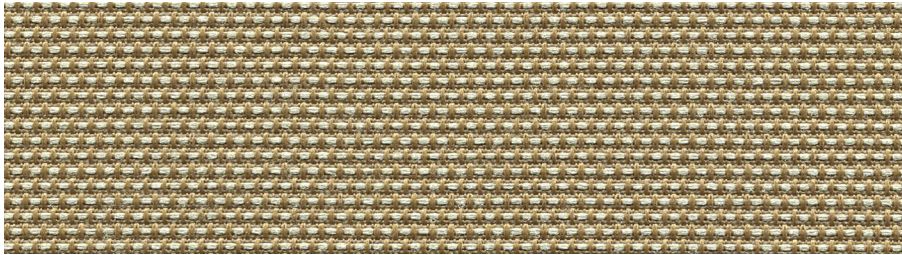
BLEACH CLEANABLE

Jane
9085

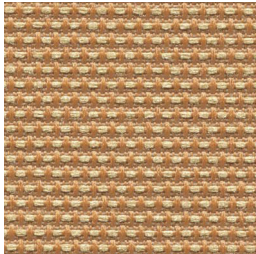
MULTI-PURPOSE | UPHOLSTERY
PANEL | ACOUSTIC

Jane 9085

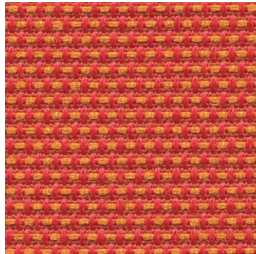
MULTI-PURPOSE | UPHOLSTERY
PANEL | ACOUSTIC



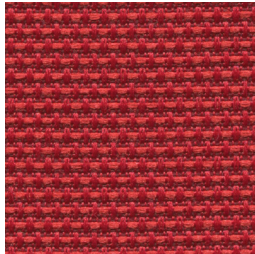
Natural
4061



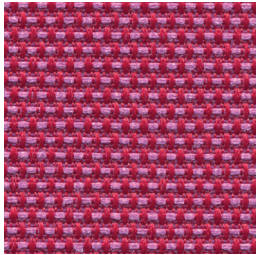
Gold
4020



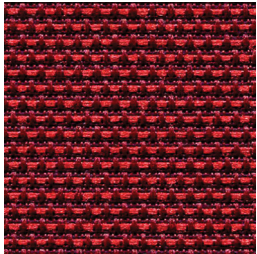
Persimmon
4050



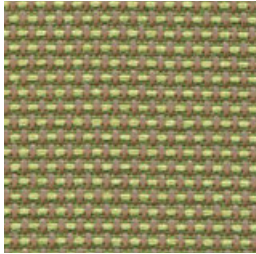
Pomegranate
4081



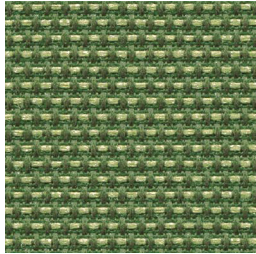
Fuchsia
4080



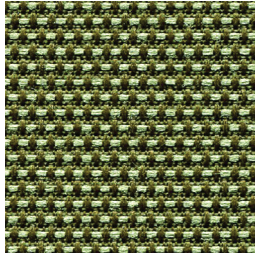
Ruby
4120



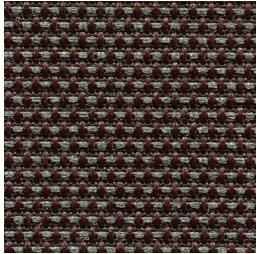
Guacamole
4060



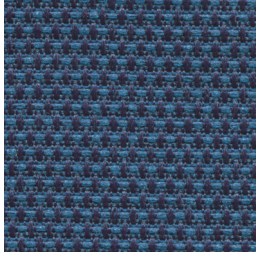
Chive
4070



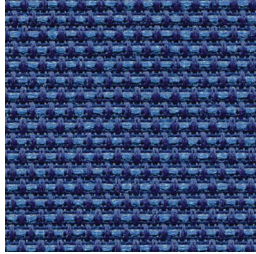
Lichen
4110



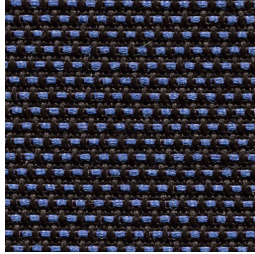
Steel
4100



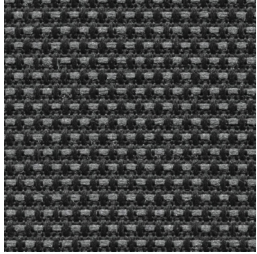
Blueberry
4091



Ultramarine
4030



Lapis
4041



Jet
4040

Specifications

Content	100% pre-consumer recycled polyester
Weight	9.7 ± 0.5 oz./lin. yd.
Width	54" min. useable
Repeat	none
Treatment	BLOCKaide® stain repellent

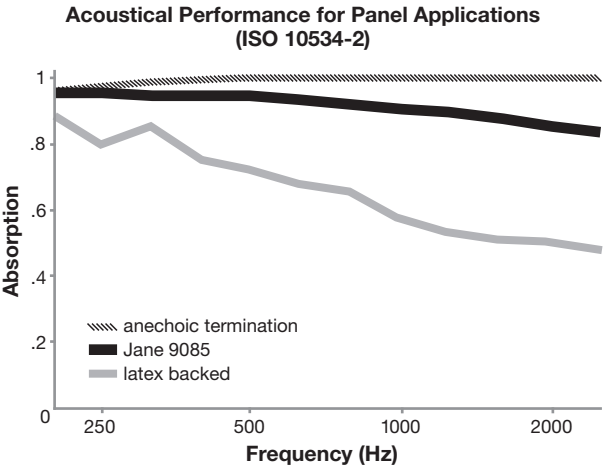
Cleaning Code

Standard Care Label W-S. Clean with water based cleaning agents, foam or pure, water free solvents. Vacuuming or light brushing is recommended to prevent dust and soil buildup.

Bleach Cleanable - May be cleaned with a 10% bleach-to-water solution. Rinse well after cleaning. May also be disinfected with hydrogen peroxide, alcohol, and quaternary ammonium (quat) based cleaners.

Acoustical Performance

The plot below summarizes impedance tube measurements of absorption of an anechoic termination and various fabrics in front of the anechoic termination.



NRC of anechoic termination	1.00
NRC of fabric in front of anechoic termination	.90

Performance

	Colorfastness to Light (AATCC 16.3 Option 3) Grade 4 min. at 40 hours
	Colorfastness to Crocking (AATCC 8) Grade 4 min. dry & Grade 3 min. wet
	Breaking Strength (ASTM D5034) 200 lbf min. warp and 130 lbf min. fill
	Seam Slippage (ASTM D4034) 50 lbf min. warp and fill
	Pilling Resistance (ASTM D3511) Class 4 min.
	Flammability CA Technical Bulletin 117-2013 Section 1 ASTM E84 Class I or A
	Abrasion (ASTM D4157) 50,000 double rubs min. cotton duck

Sustainability

	100% recycled and recyclable Terratex is a registered trademark of Duvaltex
	facts™ Compliant

Miscellaneous

Proudly woven in North America supporting our local communities.

Application testing of this product is recommended.
Colors may vary between dye lots. This is a directional fabric.

This pattern is included in the underwriters laboratory panel fabric recognition program. Additional testing of this U.L. recognized component fabric is not required on approved panels from participating manufacturers.

*Certification Marks owned by the Association for Contract Textiles, Inc.



Guilford of Maine®



Guilford of Maine®

760-599-3985
SALES@SOUNDAWAY.COM

21/05
FC-9085