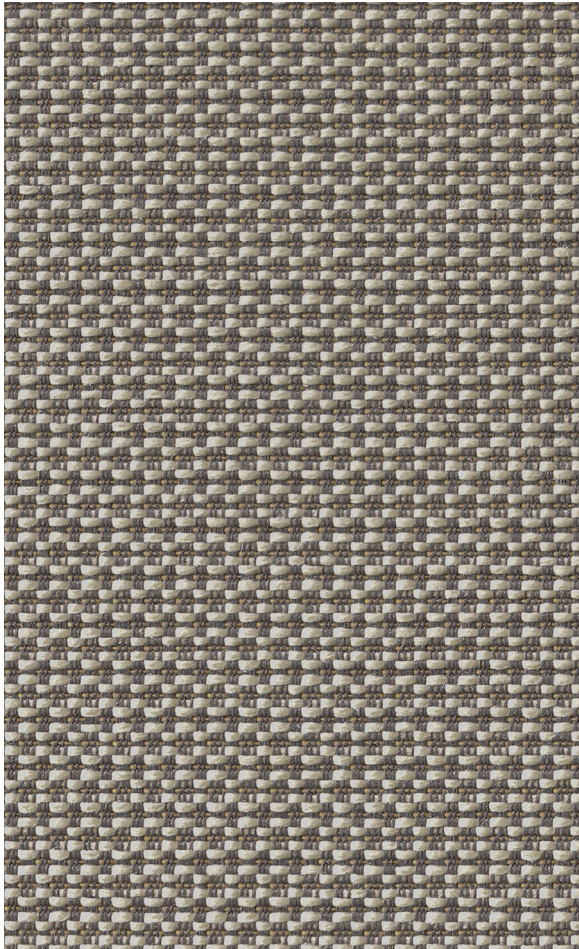


Intermix 3035

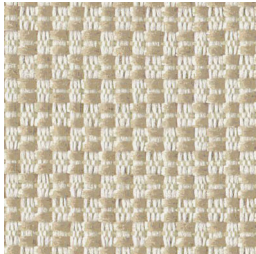
PANEL | ACOUSTIC

Intermix 3035

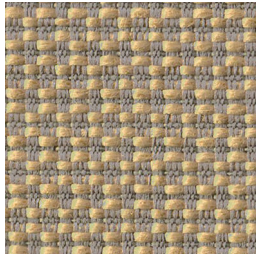
PANEL | ACOUSTIC



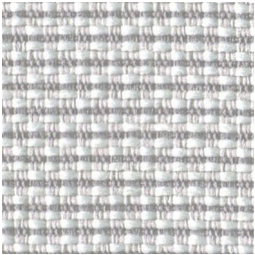
Husky 7060



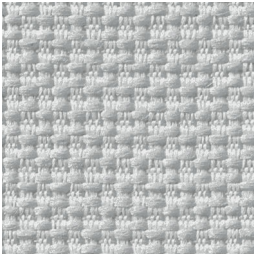
Coconut 7011



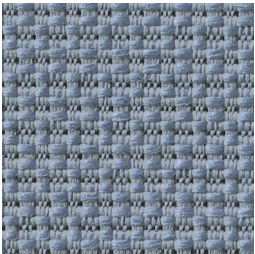
Butter Rum 7050



Seagull 7030



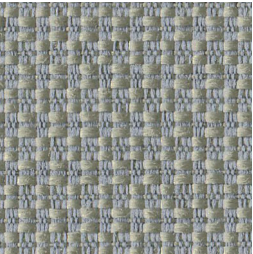
Rocket Ship 7010



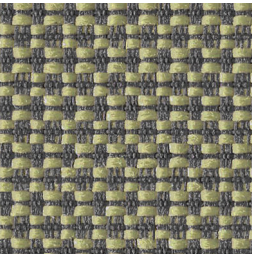
Neptune 7040



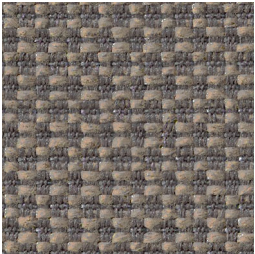
Swan 7020



Foggy 7041



Marsh 7062



Smoky Quartz 7061

Specifications

Content	100% pre-consumer recycled polyester
Weight	15.3 ± 1.0 oz./lin. yd.
Width	66" min. useable
Repeat	none
Treatment	polyester binder

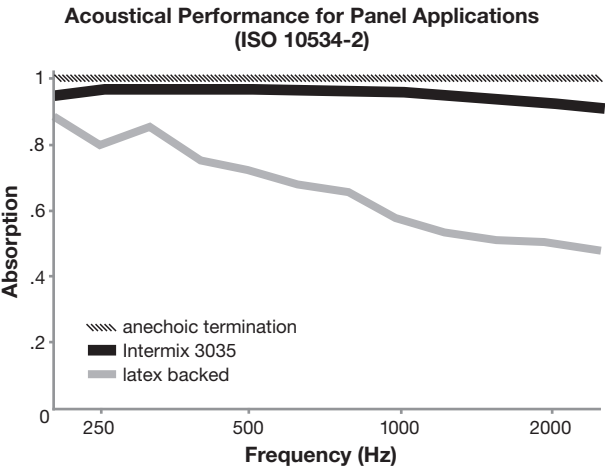
Cleaning Code

Standard Care Label W-S. Clean with water based cleaning agents, foam or pure, water free solvents. Vacuuming or light brushing is recommended to prevent dust and soil buildup.

Bleach Cleanable - May be cleaned with a 10% bleach-to-water solution. Rinse well after cleaning. May also be disinfected with hydrogen peroxide, alcohol, and quaternary ammonium (quat) based cleaners.

Acoustical Performance

The plot below summarizes impedance tube measurements of absorption of an anechoic termination and various fabrics in front of the anechoic termination.



NRC of anechoic termination	1.00
NRC of fabric in front of anechoic termination	.95

Performance

	Colorfastness to Light (AATCC 16.3 Option 3) Grade 4 min. at 40 hours
	Colorfastness to Crocking (AATCC 8) Grade 4 min. dry & Grade 3 min. wet
	Breaking Strength (ASTM D5034) 225 lbf min. warp and fill
	Flammability (ASTM E84) Class I or A

Sustainability

100% recycled and recyclable
Terratec is a registered trademark of Duvaltex

facts [™]
Compliant

Miscellaneous

Proudly woven in North America supporting our local communities.

Application testing of this product is recommended. Colors may vary between dye lots. This is a directional fabric.

This pattern is included in the underwriters laboratory panel fabric recognition program. Additional testing of this U.L. recognized component fabric is not required on approved panels from participating manufacturers.

*Certification Marks owned by the Association for Contract Textiles, Inc.