

Highbeams
9834

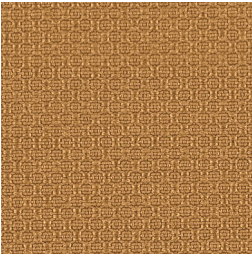
MULTI-PURPOSE | UPHOLSTERY
PANEL | ACOUSTIC

Highbeams 9834

MULTI-PURPOSE | UPHOLSTERY
PANEL | ACOUSTIC



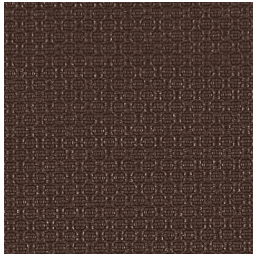
Barley
2637



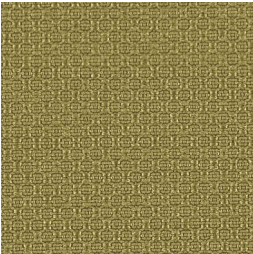
Gold Rush
2633



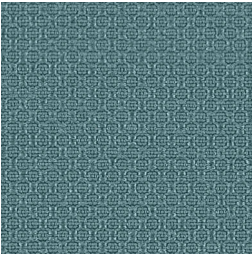
Bronze
2639



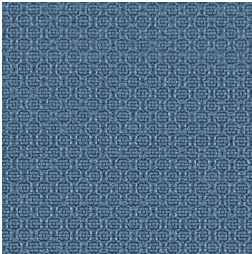
Espresso
2638



Kiwi
2643



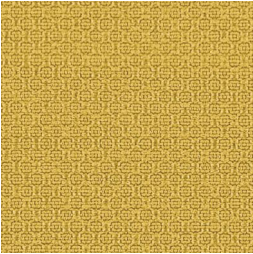
Ocean
2629



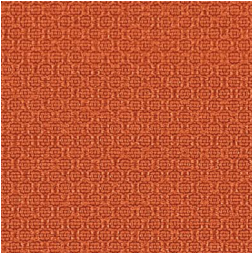
Bayberry
2632



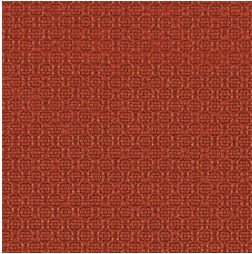
Navy
2631



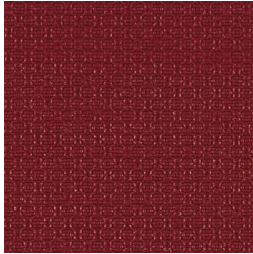
Buttercup
2640



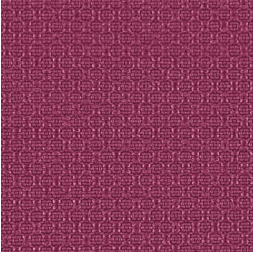
Tangerine
2647



Rust
2636



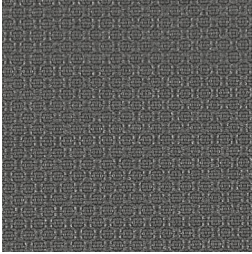
Maroon
2634



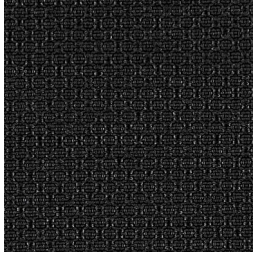
Magenta
2692



Grape
2641



Slate
2645



Black
2644

Specifications

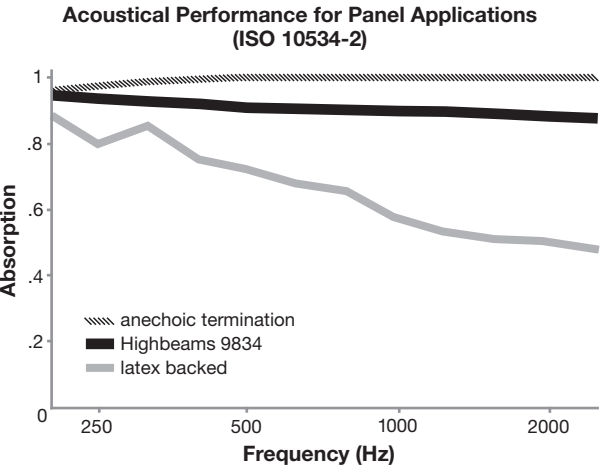
Content	75% pre-consumer recycled polyester 25% post-consumer recycled polyester
Weight	11.2 ± 0.5 oz./lin. yd.
Width	54" min. useable
Repeat	none
Treatment	BLOCKaide® stain repellent

Cleaning Code

Standard Care Label W-S. Clean with water based cleaning agents, foam or pure, water free solvents. Vacuuming or light brushing is recommended to prevent dust and soil buildup. May also be disinfected with hydrogen peroxide, alcohol, and quaternary ammonium (quat) based cleaners.

Acoustical Performance

The plot below summarizes impedance tube measurements of absorption of an anechoic termination and various fabrics in front of the anechoic termination.



NRC of anechoic termination	1.00
NRC of fabric in front of anechoic termination	.90

Performance

	Colorfastness to Light (AATCC 16.3 Option 3) Grade 4 min. at 40 hours
	Colorfastness to Crocking (AATCC 8) Grade 4 min. dry & Grade 3 min. wet
	Breaking Strength (ASTM D5034) 200 lbf min. warp and fill
	Seam Slippage (ASTM D4034) 70 lbf min. warp and fill
	Pilling Resistance (ASTM D3511) Class 4 min.
	Flammability CA Technical Bulletin 117-2013 Section 1 ASTM E84 Class I or A
	Abrasion (ASTM D4157) 50,000 double rubs min. cotton duck

Sustainability

100% recycled and recyclable
Terratec is a registered trademark of Duvaltex

Miscellaneous

Proudly woven in North America supporting our local communities.

Application testing of this product is recommended.
Colors may vary between dye lots. This is a directional fabric.

This pattern is included in the underwriters laboratory panel fabric recognition program. Additional testing of this U.L. recognized component fabric is not required on approved panels from participating manufacturers.

*Certification Marks owned by the Association for Contract Textiles, Inc.