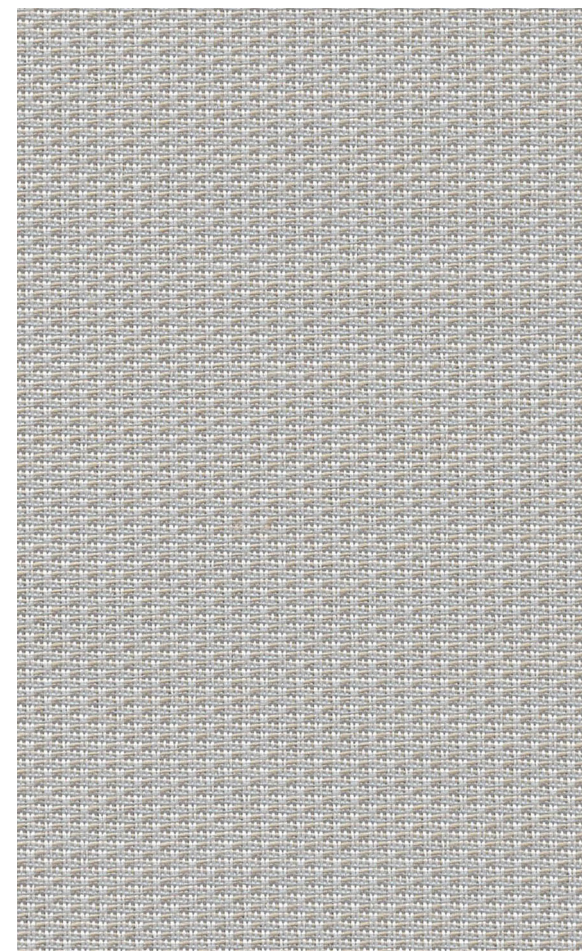


Essence 4873

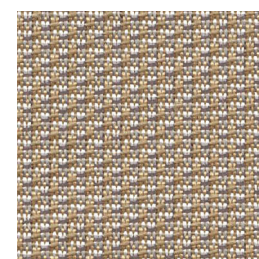
PANEL

PANEL

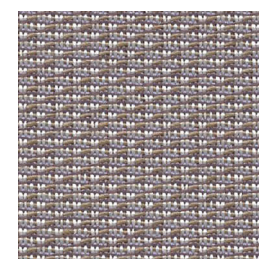
Essence 4873



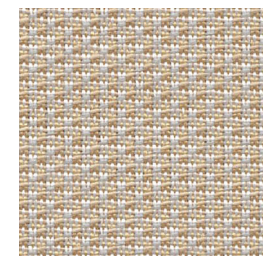
Ash
2634



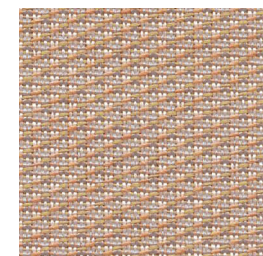
Tobacco
2635



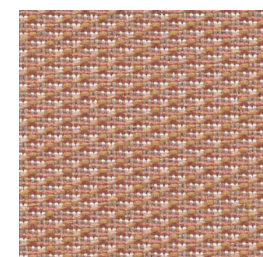
Charcoal Melange
2637



Cream
2631



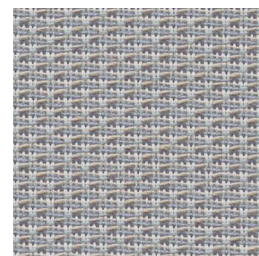
Tawny
2630



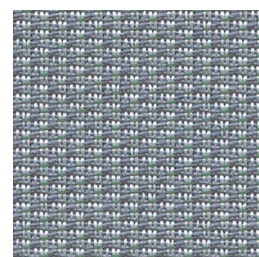
Clementine
2638



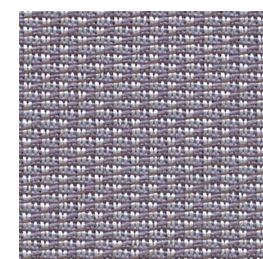
Spanish Olive
2632



Heather
2633



Waters
2636



Boysenberry
2639

Specifications

Content	100% polyester
Weight	11.8 ± 1.0 oz./lin. yd.
Width	66" min. useable
Repeat	.27" vertical .18" horizontal

Cleaning Code

Standard Care Label W-S. Clean with water based cleaning agents, foam or pure, water free solvents. Vacuuming or light brushing is recommended to prevent dust and soil buildup. May also be disinfected with hydrogen peroxide, alcohol, and quaternary ammonium (quat) based cleaners.

Miscellaneous

Proudly woven in North America supporting our local communities.

Application testing of this product is recommended. Colors may vary between dye lots. This is a directional fabric.



This pattern is included in the underwriters laboratory panel fabric recognition program. Additional testing of this U.L. recognized component fabric is not required on approved panels from participating manufacturers.

*Certification Marks owned by the Association for Contract Textiles, Inc.

Performance

- Colorfastness to Light (AATCC 16.3 Option 3)
Grade 4 min. at 40 hours
- Colorfastness to Crocking (AATCC 8)
Grade 4 min. dry & Grade 3 min. wet
- Breaking Strength (ASTM D5034)
160 lbf warp and 105 lbf fill
- Flammability (ASTM E84)
Class I or A

Sustainability

