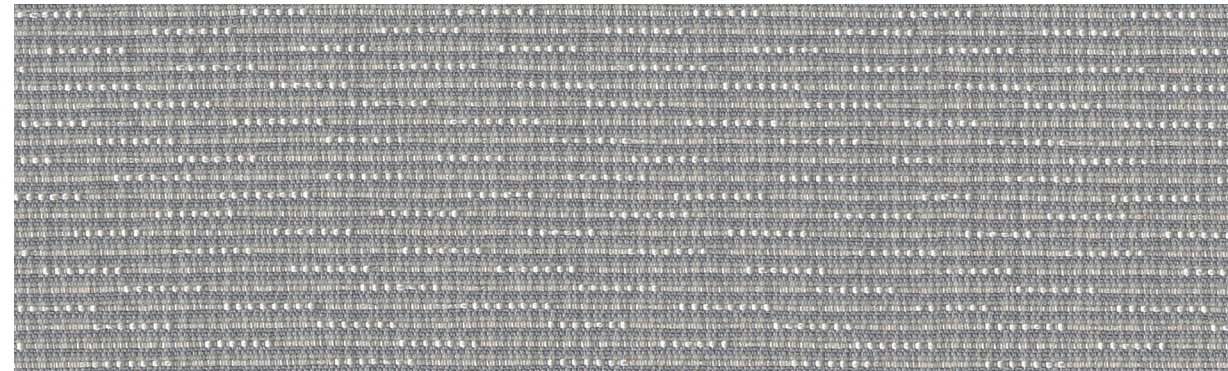


Dashing 1204

PANEL

PANEL



Dapper Grey
1047



Polished Slate
1044



Refined Marble
1042



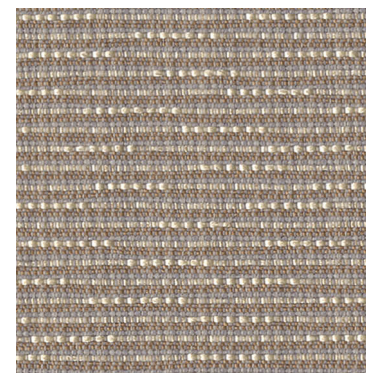
Antique Sage
1045



Classic Silver
1041



Genteel Beige
1043



Bespoke Tan
1046

Dashing 1204

Specifications

Content	92% post-consumer recycled polyester 8% pre-consumer recycled polyester
Weight	10.9 ± 1.0 oz./lin. yd.
Width	66" min. useable
Repeat	2" vertical 2.4" horizontal


Cleaning Code

Standard Care Label W-S. Clean with water based cleaning agents, foam or pure, water free solvents. Vacuuming or light brushing is recommended to prevent dust and soil buildup. May also be disinfected with hydrogen peroxide, alcohol, and quaternary ammonium (quat) based cleaners.

Miscellaneous


Proudly woven in North America supporting our local communities.


Application testing of this product is recommended. Colors may vary between dye lots. This is a directional fabric.


 This pattern is included in the underwriters laboratory panel fabric recognition program. Additional testing of this U.L. recognized component fabric is not required on approved panels from participating manufacturers.


*Certification Marks owned by the Association for Contract Textiles, Inc.

Performance


-  Colorfastness to Light (AATCC 16.3 Option 3)
Grade 4 min. at 40 hours

-  Colorfastness to Crocking (AATCC 8)
Grade 4 min. dry & Grade 3 min. wet

-  Breaking Strength (ASTM D5034)
240 lbf warp and 190 lbf fill

-  Flammability (ASTM E84)
Class I or A

Sustainability

 **100% recycled and recyclable**
Terratex is a registered trademark of Duvaltex

 **facts[™]
gold**