

BeeHave 3948

MULTI-PURPOSE | UPHOLSTERY
PANEL | ACOUSTIC

MULTI-PURPOSE | UPHOLSTERY
PANEL | ACOUSTIC

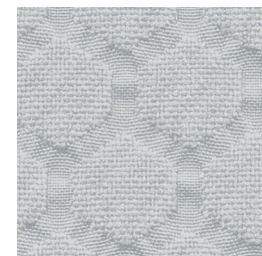
BeeHave 3948



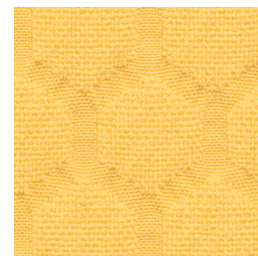
Pear
2698



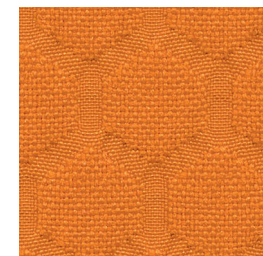
Pine
2806



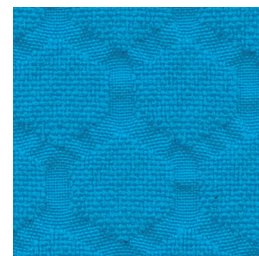
Gris
2701



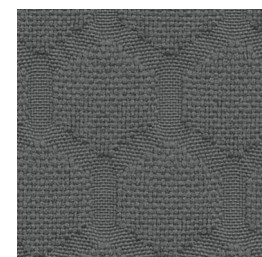
Lemon
2805



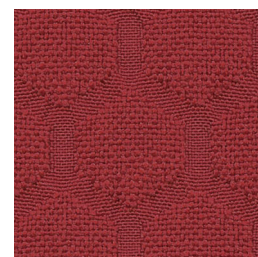
Clementine
2804



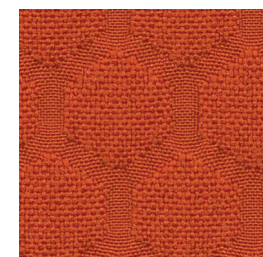
Azure
2696



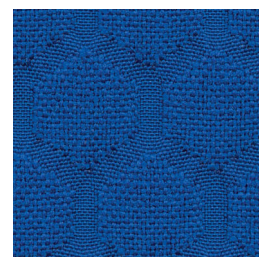
Slate
2703



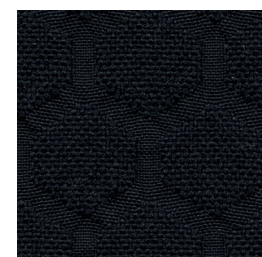
Currant
2802



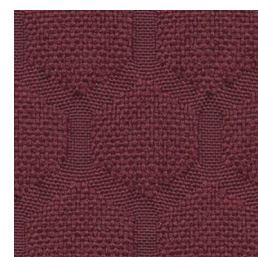
Carnelian
2803



Lapis
2807



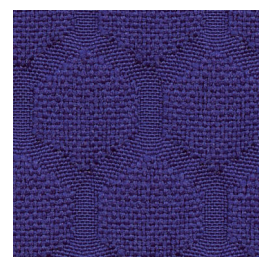
Black
2702



Plum
2801



Java
2704



Concord
2808

Specifications

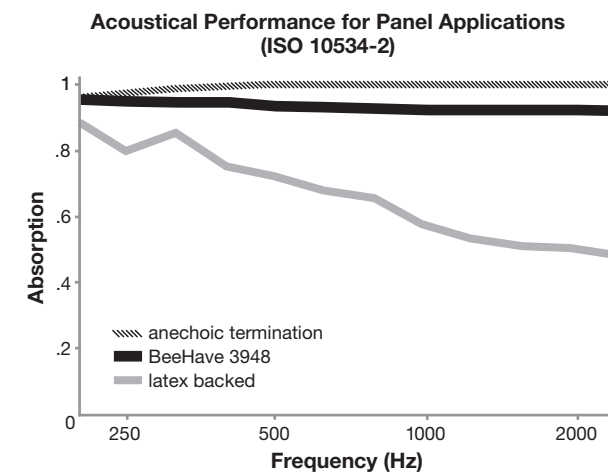
Content	65% pre-consumer recycled polyester 35% post-consumer recycled polyester
Weight	12.1 ± 1.0 oz./lin. yd.
Width	54" min. useable
Repeat	1.1" vertical .75" horizontal
Backing	none
Treatment	BLOCKaide® stain repellent

Cleaning Code

Standard Care Label W-S. Clean with water based cleaning agents, foam or pure, water free solvents. Vacuuming or light brushing is recommended to prevent dust and soil buildup. May also be disinfected with hydrogen peroxide, alcohol, and quaternary ammonium (quat) based cleaners.

Acoustical Performance

The plot below summarizes impedance tube measurements of absorption of an anechoic termination and various fabrics in front of the anechoic termination.



NRC of anechoic termination **1.00**
NRC of fabric in front of anechoic termination **.95**

Performance

- Colorfastness to Light (AATCC 16.3 Option 3)
Grade 4 min. at 40 hours
- Colorfastness to Crocking (AATCC 8)
Grade 4 min. dry & Grade 3 min. wet
- Breaking Strength (ASTM D5034)
250 lbf min. warp and 175 lbf min. fill
- Seam Slippage (ASTM D4034)
50 lbf min. warp and 40 lbf min. fill
- Pilling Resistance (ASTM D3511)
Class 4 min.
- Flammability
**CA Technical Bulletin 117-2013 Section 1
ASTM E84 Class I or A**
- Abrasion (ASTM D4157)
75,000 double rubs min. cotton duck

Sustainability

100% recycled and recyclable
Terratex is a registered trademark of Duvaltex

Miscellaneous

Proudly woven in North America supporting our local communities.
Application testing of this product is recommended.
Colors may vary between dye lots. This is a directional fabric.

This pattern is included in the underwriters laboratory panel fabric recognition program. Additional testing of this U.L. recognized component fabric is not required on approved panels from participating manufacturers.

*Certification Marks owned by the Association for Contract Textiles, Inc.