

Spinel 3582

Acoustic



Alabaster
058



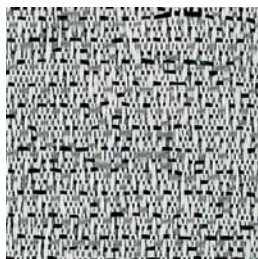
Sandstone
050



Granite
015



Opal
011



Petoskey
056



Amber
113



Perlite
080



Yellowstone
112



Patina
013



Tiger Eye
030



Guilden
070



Quarry
091



Smoky Quartz
031



Slate
130



Obsidian
021

Spinel 3582

Acoustic

Specifications

Content

32% post-consumer recycled polyester
68% pre-consumer recycled polyester

Weight

11.8 ± 1.0 oz./lin. yd.

Width

66" min. useable

Repeat

16.5" vertical and horizontal

Cleaning Code

W-S

Performance



Colorfastness to Light (AATCC 16 Option 3)
Grade 4 min. at 40 hours



Colorfastness to Crocking (AATCC 8)
Grade 4 min. dry & Grade 3 min. wet



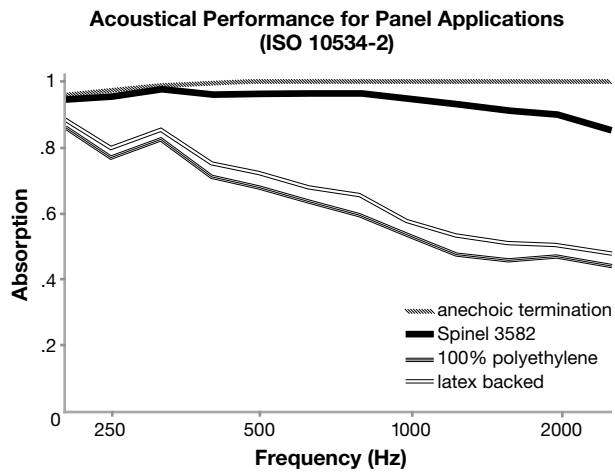
Breaking Strength (ASTM D5034)
220 lbf min. warp and 90 lbf min. fill



Flammability (ASTM E84)
Class I or A

Acoustical Performance

The plot below summarizes impedance tube measurements of absorption of an anechoic termination and various fabrics in front of the anechoic termination.



NRC of anechoic termination

1.00

NRC of fabric in front of anechoic termination

.95

Miscellaneous

Colors may vary slightly between dye lots.

This is a directional fabric.

Application testing of this product is recommended.

Visit SoundAway.com or call to request samples.



Terratex is a registered trademark of True Textiles, Inc. and designates fabrics that are made from 100% recycled or compostable material using increasingly sustainable manufacturing practices to produce a high quality product that is recyclable at the end of its useful life.



CO₂ emissions from 100% of the electricity used by the manufacturer to produce this product have been measured and offset in accordance with The CarbonNeutral Protocol.



This pattern is included in the underwriters laboratory panel fabric recognition program. Additional testing of this U.L. recognized component fabric is not required on approved panels from participating manufacturers.

*ACT® registered certification marks.

Sound  Away
.com

760.599.3985 Sales@SoundAway.com

 Guilford of Maine®