

# Metro 3077

Acoustic



**Storefront**  
030



**Golddust**  
010



**Cement**  
031



**Limestone**  
040



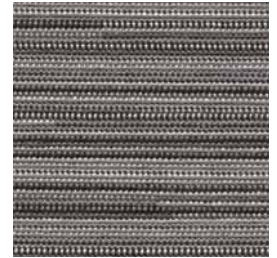
**Central Park**  
050



**Downtown**  
020



**Skyscraper**  
022



**Subway**  
024

# Metro 3077

Acoustic

## Specifications

### Content

11% post-consumer recycled polyester  
89% pre-consumer recycled polyester

### Weight

10.7 ± 1.0 oz./lin. yd.

### Width

66" min. useable

### Repeat

8.57" vertical, 14.12" horizontal

## Cleaning Code

W-S

## Performance



### Colorfastness to Light (AATCC 16 Option 3)

Grade 4 min. at 40 hours



### Colorfastness to Crocking (AATCC 8)

Grade 4 min. dry & Grade 3 min. wet



### Breaking Strength (ASTM D5034)

250 lbf min. warp and 150 lbf min. fill

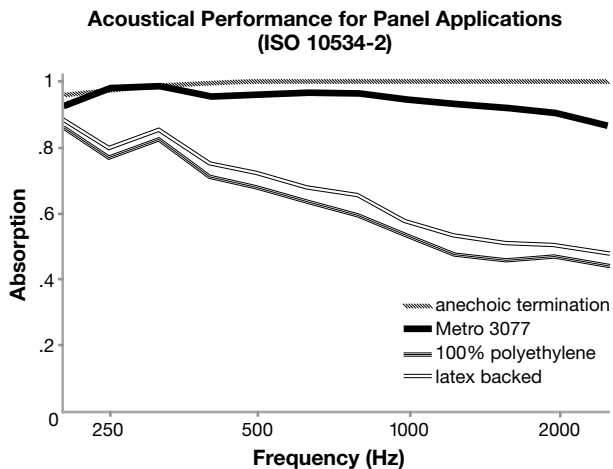


### Flammability (ASTM E84)

Class I or A

## Acoustical Performance

The plot below summarizes impedance tube measurements of absorption of an anechoic termination and various fabrics in front of the anechoic termination.



### NRC of anechoic termination

1.00

### NRC of fabric in front of anechoic termination

.95

## Miscellaneous

Colors may vary slightly between dye lots.

This is a directional fabric.

Application testing of this product is recommended.

Visit [SoundAway.com](http://SoundAway.com) or call to request samples.



Terratex is a registered trademark of True Textiles, Inc. and designates fabrics that are made from 100% recycled or compostable material using increasingly sustainable manufacturing practices to produce a high quality product that is recyclable at the end of its useful life.



CO<sub>2</sub> emissions from 100% of the electricity used by the manufacturer to produce this product have been measured and offset in accordance with The CarbonNeutral Protocol.



This pattern is included in the underwriters laboratory panel fabric recognition program. Additional testing of this U.L. recognized component fabric is not required on approved panels from participating manufacturers.

\*ACT® registered certification marks.

Sound  Away  
.com

760.599.3985 [Sales@SoundAway.com](mailto:Sales@SoundAway.com)

 Guilford of Maine®