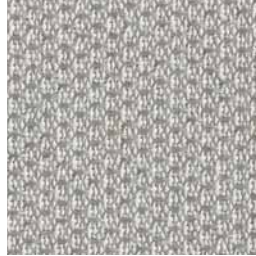


Metallation 2118

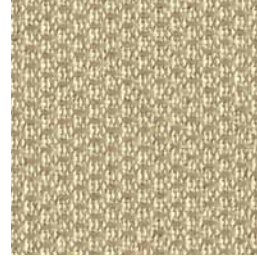
Acoustic



Chrome
1676



Stainless
1625



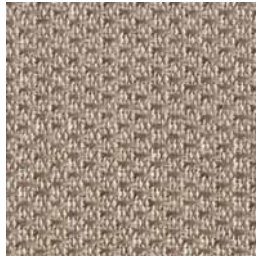
Etched Bronze
1623



18 Karat
1627



Polished Pewter
1678



Welded Steel
1677



Fired Titanium
1633



Wrought Iron
1680



Dark Annealed
1629



Stove Pipe
1628

Metallation 2118

Acoustic

Specifications

Content

100% polyester

Weight

15.2 ± 0.5 oz./lin. yd.

Width

66" min. useable

Repeat

none

Cleaning Code

W-S

Performance

Colorfastness to Light (AATCC 16 Option 3)

Grade 4 min. at 40 hours



Colorfastness to Crocking (AATCC 8)

Grade 4 min. dry & Grade 3 min. wet



Breaking Strength (ASTM D5034)

150 lbf min. warp and fill



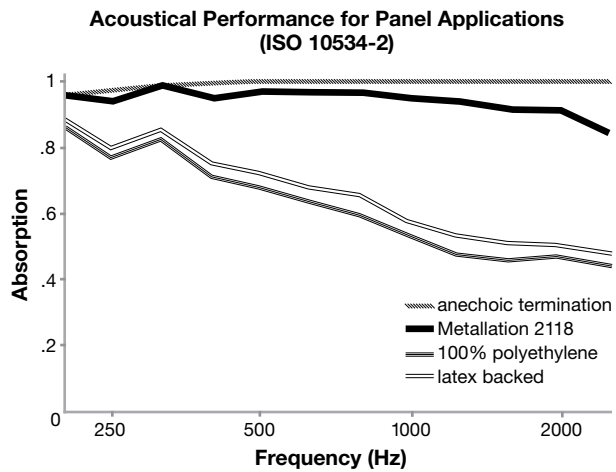
Flammability (ASTM E84)

Class I or A



Acoustical Performance

The plot below summarizes impedance tube measurements of absorption of an anechoic termination and various fabrics in front of the anechoic termination.



NRC of anechoic termination

1.00

NRC of fabric in front of anechoic termination

.95

Miscellaneous

Colors may vary slightly between dye lots.

This is a directional fabric.

Application testing of this product is recommended.

Visit SoundAway.com or call to request samples.



This pattern is included in the underwriters laboratory panel fabric recognition program. Additional testing of this U.L. recognized component fabric is not required on approved panels from participating manufacturers.

*ACT® registered certification marks.

Sound  Away
.com

760.599.3985 Sales@SoundAway.com

 Guilford of Maine®