

Anchorage 2335

Panel
Acoustic



White
2664



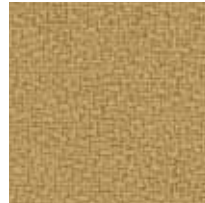
Birch
2129



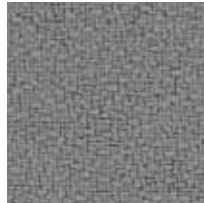
Vanilla
2130



Angora
2035



Straw
2034



Asteroid
2053



Goose
2049



Fossil
2093



Graphite
2079



Onyx
2016



Slate
2017



Wolf
2027



Quarry Blue
2026



Waterfall
2691



Lapis
2094



Sea
2077



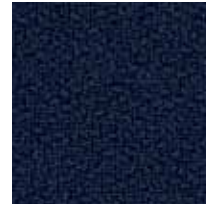
Deep Water
2051



Thistle
2085



Cobalt
2045



Midnight
2025



Green Olive
2048



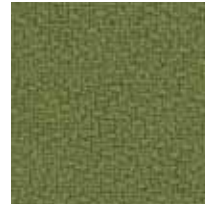
Eucalyptus
2047



Cumin
2050



Green Apple
2087



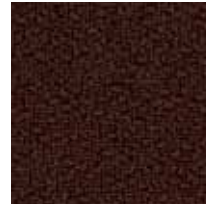
Willow
2028



Pine Needle
2022



Henna
2052



Coffee Bean
2083



Sunshine
2082



Goldenrod
2090



Amber
2020



Pumpkin
2021



Poppy
2091



Magenta
2692



Geranium
2084



Red Delicious
2014



Mulberry
2044



Aubergine
2036

Anchorage 2335

Panel
Acoustic

Specifications

Content

35% post-consumer recycled polyester
65% pre-consumer recycled polyester

Weight

15.0 ± 1.0 oz./lin. yd.

Width

66" min. useable


Repeat


none


Cleaning Code


W-S

Performance

 **Colorfastness to Light (AATCC 16 Option 3)**
Grade 4 min. at 40 hours

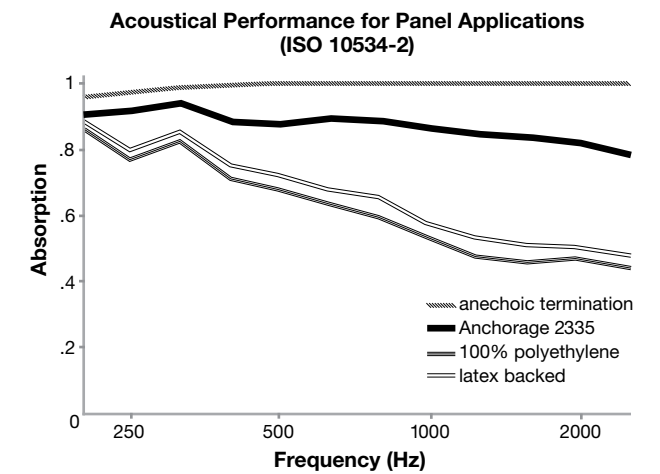
 **Colorfastness to Crocking (AATCC 8)**
Grade 4 min. dry & Grade 3 min. wet

 **Breaking Strength (ASTM D5034)**
275 lbf min. warp and fill

 **Flammability (ASTM E84)**
Class I or A

Acoustical Performance

The plot below summarizes impedance tube measurements of absorption of an anechoic termination and various fabrics in front of the anechoic termination.



NRC of anechoic termination
1.00

NRC of fabric in front of anechoic termination
.85

Miscellaneous

Proudly woven in the USA supporting our local communities.
Colors may vary slightly between dye lots.
This is a directional fabric.
Application testing of this product is recommended.
Also available in 54" width (Open House 2334) except colors White and Sea.

Visit [SoundAway.com](https://www.SoundAway.com) or call to request samples.



Terratex is a registered trademark of True Textiles, Inc. and designates fabrics that are made from 100% recycled or compostable material using increasingly sustainable manufacturing practices to produce a high quality product that is recyclable at the end of its useful life.



CO₂ emissions from 100% of the electricity used by the manufacturer to produce this product have been measured and offset in accordance with The CarbonNeutral Protocol.



This pattern is included in the underwriters laboratory panel fabric recognition program. Additional testing of this U.L. recognized component fabric is not required on approved panels from participating manufacturers.

ACT registered certification marks.


760.599.3985 Sales@SoundAway.com

 **Guilford of Maine**